

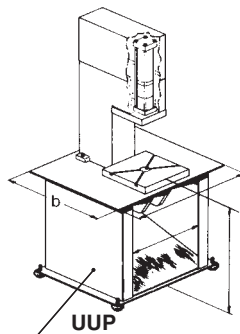
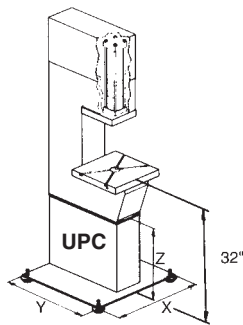
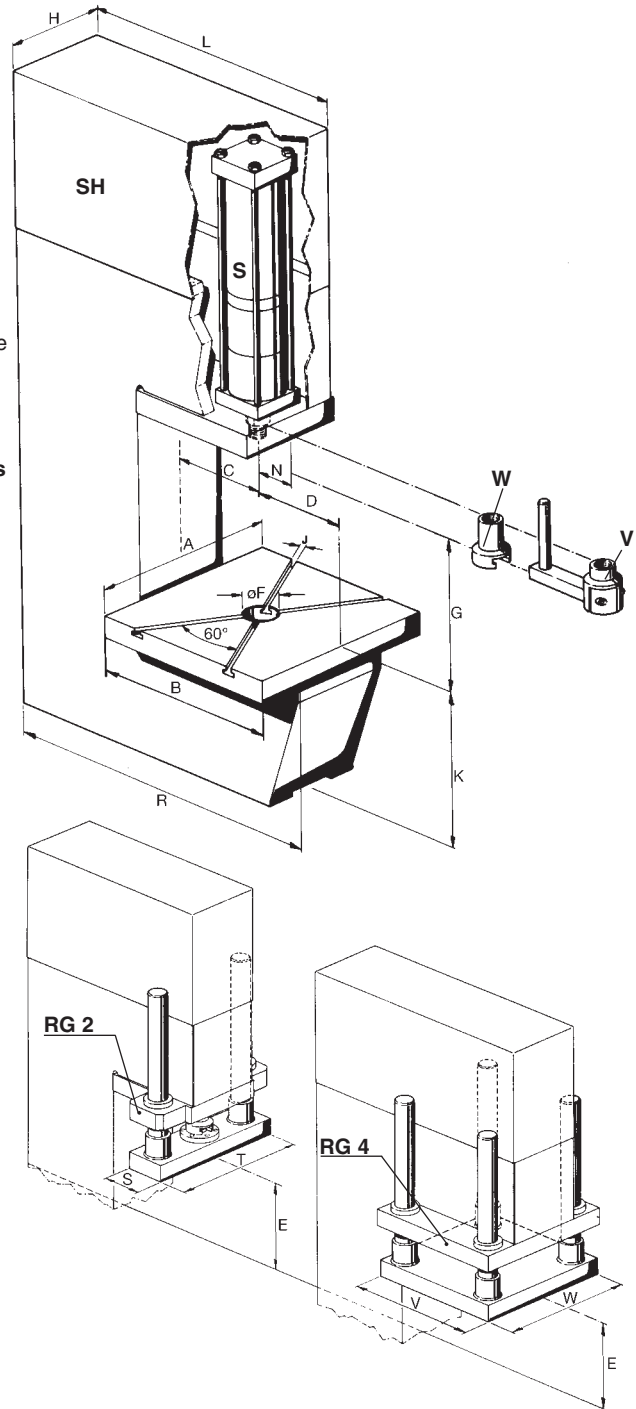
C-Frame Presses

Series PC/PCG



Our modular design simplifies the selection of a TOX®-Press that fits your individual needs.
Controls: per your requirements, see page 20.
NOTE: press shown may include optional equipment.

- Ordering example for a TOX®-Press PC:**
 Consisting of:
PC TOX®-Pressframe
S/K TOX®-Powerpackage
STE Safety controls
Options:
UPC..... Pedestal base
UUP..... Machine base
W..... Tool fixture
ZKF Coupling flange
V..... Antirotating fixture
RG2..... 2-column ramguide
RG4..... 4-column ramguide
T-slot In bolster or ramguide
SH Hood
ZDO..... Pressure switch
ZLV Leveling feet



(Dimensions similar to UUM, page 17)

TOX®-Presses PC/PCG

Dimensions in inches.

Order number	Capacity		A	B	C	D	E	ØF	TOX®-Powerpackage dependent		H	T-Slot DIN J H11	K	L	N*	R	S	T	V	W	Pedestal*		
	kN	(t)							G	S											X	Y	Z
PC 04	40	(4)	12.0	12.0	6.0	6.0	8.0	2.0	S 4 = 12.3	S 8 = 12.1	7.0	5/16	10.0	18.0	2.5	21.5	4.5	11.5	11.5	11.5	23.0	19.0	20.5
PC 08	80	(8)	16.0	16.0	8.0	8.0	9.0	3.0	S 8 = 14.7	S 15 = 14.6	8.0	3/8	12.0	22.0	3.0	27.0	4.5	15.0	15.0	15.0	25.0	25.0	18.5
PC 15	150	(15)	17.0	17.0	9.0	8.0	10.5	3.0	S 15 = 16.1	S 30 = 15.7	10.0	3/8	13.0	26.0	4.0	30.0	4.5	17.0	17.0	17.0	27.0	28.0	17.0
PC 30	300	(30)	21.0	20.0	10.0	10.0	12.0	4.0	S 30 = 18.3	S 50 = 18.1	13.0	1/2	17.5	30.0	5.0	35.0	7.0	21.0	19.0	20.5	28.0	32.0	14.5
PC 50	500	(50)	23.0	20.0	10.0	10.0	12.0	4.0	S 50 = 19.4		14.0	1/2	17.5	30.0	5.0	35.0	7.0	22.5	19.0	22.5	30.0	32.0	14.0
PC 75	750	(75)	35.0	20.0	10.0	10.0	12.5	4.5	S 75 = 21.4	S100 = 21.4	20.0	-	-	50.0	10.0	50.0	-	-	19.0	34.0	40.0	50.0	-
PC 100	1000	(100)	40.0	20.0	10.0	10.0	12.5	4.5	S100 = 21.9		21.0	-	-	50.0	10.0	50.0	-	-	19.0	38.0	40.0	50.0	-
PCG 08	80	(8)	20.0	20.0	12.0	8.0	13.0	3.0	S 8 = 18.7	S 15 = 18.6	8.0	3/8	30.0	34.0	4.0	38.0	4.5	15.0	15.0	15.0	32.0	39.0	-
PCG 15	150	(15)	22.0	22.0	13.0	9.0	14.0	3.0	S 15 = 19.6	S 30 = 19.2	10.0	3/8	30.0	41.0	5.0	45.0	4.5	17.0	17.0	17.0	35.0	46.0	-
PCG 30	300	(30)	28.0	24.0	14.0	10.0	16.0	4.0	S 30 = 22.5	S 50 = 22.3	14.5	1/2	30.0	44.0	6.0	48.0	7.0	23.0	19.0	23.0	40.0	48.0	-
PCG 50	500	(50)	28.0	24.0	14.0	10.0	16.0	4.0	S 50 = 23.4		15.0	1/2	30.0	45.0	6.0	49.0	7.0	25.0	19.0	25.0	40.0	50.0	-
PCG 75	750	(75)	40.0	28.0	14.0	14.0	20.0	4.5	S 75 = 29.1	S100 = 29.1	20.0	-	30.0	54.0	10.0	58.0	-	-	19.0	34.0	40.0	58.0	-
PCG 100	1000	(100)	44.0	28.0	14.0	14.0	20.0	4.5	S100 = 29.9		21.0	-	30.0	54.0	10.0	58.0	-	-	19.0	38.0	44.0	58.0	-

PC = Standard, PCG = Large Tooling Area

G = Dimension from bolster to shoulder on cylinder rod.

N* = Dimension N changes for 4-column ramguide.

For accessories, please refer to individual data sheets.

* UPC for PC 04 - PC50;
 PC75 and PCG presses have side plates extended to floor.

Press drive:

These presses can incorporate any of our S/K-TOX®-Powerpackages or TOX®-Hydraulic cylinders type HZ. Total strokes up to 400 mm. Powerstrokes up to 200 mm.

Specials available on request.